

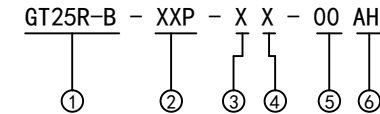
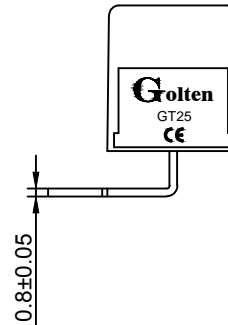
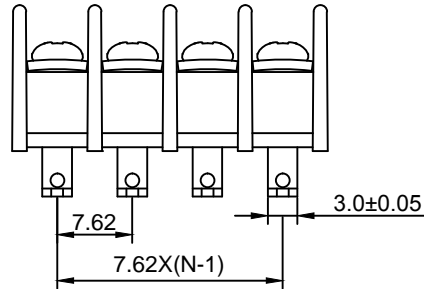
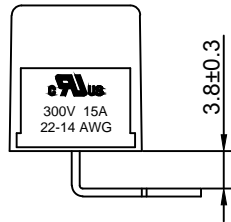
Material :

- ① Housing : PA66(UL94V-0)
- ② Terminal : Brass , Tin Plated
- ③ Screws : Steel , Ni Plated

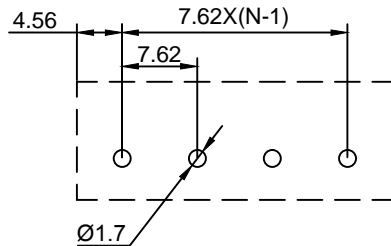
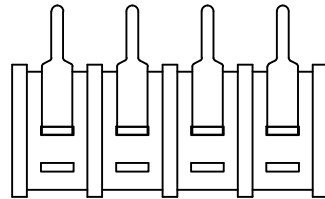
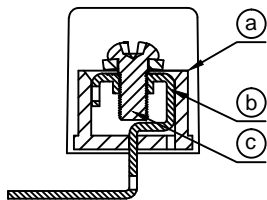
Electrical :

- | | | |
|-------------------------------|----------------|--------------------|
| | UL | IEC |
| 1. Rated Voltage : | 300V | 250V |
| 2. Rated Current : | 15A | 24A |
| 3. Torque Value : | M3 , 4.43Lb.in | M3 , 0.5N.m |
| 4. Wire Range : | 22-14AWG | 2.5mm ² |
| 5. Stripping Length : | 7-8mm | |
| 6. Withstanding Voltage : | AC1600V/1Min. | |
| 7. Operating Temperature : | -40°C~+105°C | |
| 8. RoHS Compliance | | |
| 9. Safty Approval : | | |
| 10. Undimensioned Tolerances: | | |

Pitch Range In mm			Nominal Dimension Range In mm							—	∩	∇
≤6	6 ~ 10	10 ~ 24	≤30	30 ~ 60	60 ~ 100	100 ~ 150	>150	0.05/10				
±0.10	±0.15	±0.25	±0.20	±0.30	±0.50	±0.70	±1.00	±0.1°				



- ① Series No.
- ② Poles
02 02Contacts
03 03Contacts
...
24 24Contacts
- ③ 1 Single Pitch
2 Double Pitch
- ④ Color: 1 Grey
2 Blue
3 Black(Standard For AH)
4 Green
5 Orange
6 Red
7 Transparent
8 Yellow
9 White
- ⑤ Customer Request : 00--Standard
- ⑥ AH--Standard(PA66)



DETACHED LISTS	Grolten NINGBO GOLTEN ELECTRONICS CO., LTD.		宁波冠泰电子有限公司			
	APPD: MA_7/16/16'	CHKD: Yu_7/15/16'	PART NO. GT25R-B-XXP-XX-00AH			
	DRFT: Chen_7/14/16'	DRAWING NO.		REV	1	
	 THIRD ANGLE PROJECTION		MM (INCH)	DO NOT SCALE DRAWING	SHEET	1/1
			SCALE	1/1		