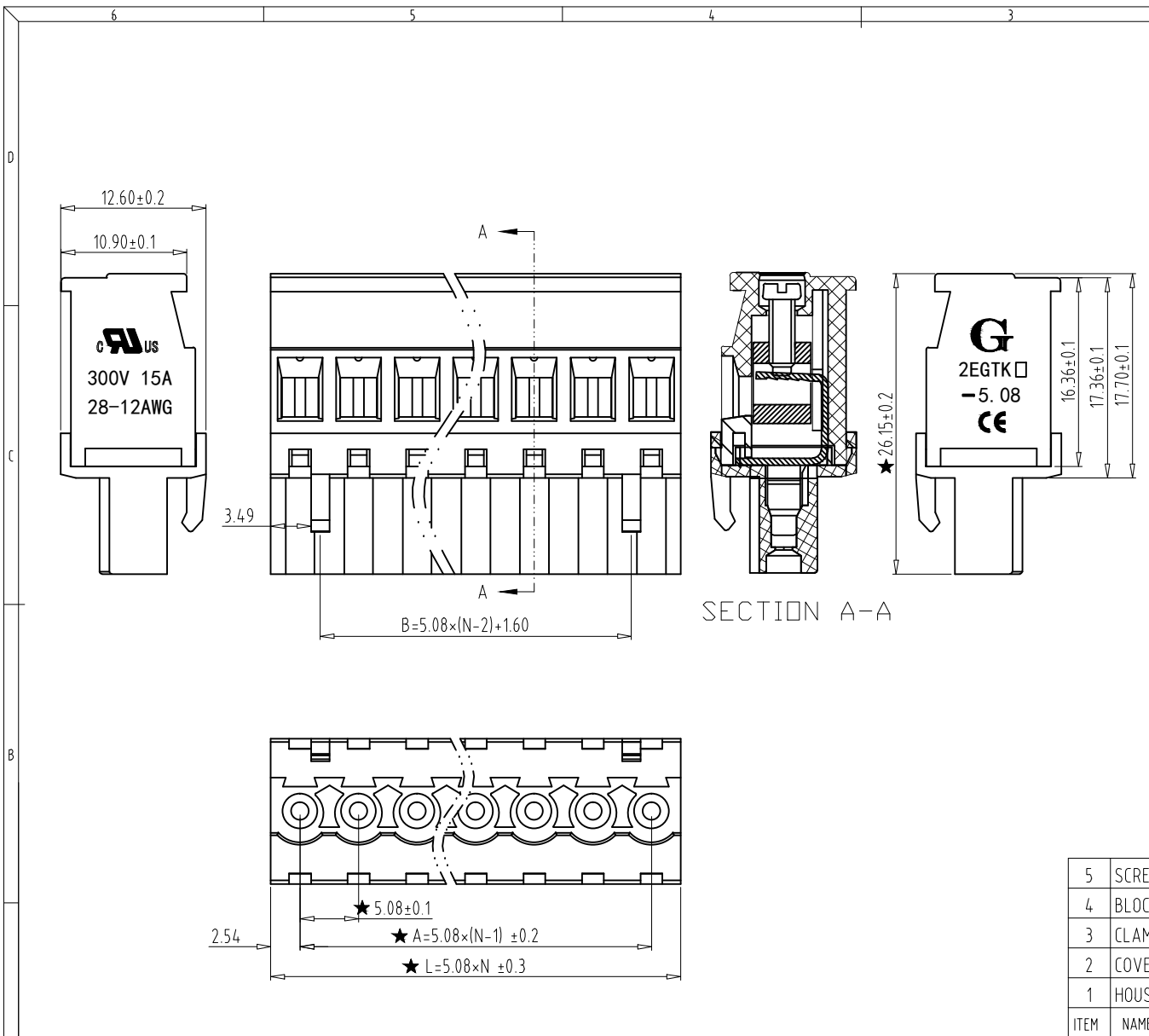


REV	CONTENT	CHK	DATE
V0.0	CONTENT	EXL	20.07.15



**Electrical :**

- |  |                 |                    |
|--|-----------------|--------------------|
|  | UL              | IEC                |
| 1. Rated Voltage :                       | 300V            | 320V               |
| 2. Rated Current :                       | 15A             | 10A                |
| 3. Torque Value :                        | M2.5 ,3.54Lb.in | M2.5, 0.4N.m       |
| 4. Wire Range:                           | 28-12AWG        | 2.5mm <sup>2</sup> |
| 5. Stripping Length :                    | 7-8mm           |                    |
| 6. Withstanding Voltage :                | AC1600V/1Min.   |                    |
| 7. Operating Temperature :               | -40 °C~+105°C   |                    |
| 8. RoHS Compliance                       |                 |                    |
| 9. Safty Approval :                      | UL US CE        |                    |
| 10. ★ " is the key quality control point |                 |                    |

2EGTKA - 5.08 -XXP - X X - 100

- |              |         |  |                                    |  |  |
|--------------|---------|--|------------------------------------|--|--|
| ①            | ②       | ③  | ④                                  | ⑤  | ⑥                                      |
| ① Series NO. | ② Pitch | ③ Poles  | ④ 1 Single Pitch<br>2 Double Pitch | ⑤ Color: 1 Grey<br>2 Blue<br>3 Black<br>4 Green<br>5 Orange<br>6 Red<br>7 Transparent<br>8 Yellow<br>9 White | ⑥ Customer Request: 100--M2.5-Standard |
|              |         | 02 02Contacts<br>03 03Contacts<br>...<br>24 24Contacts |                                    |  |  |

5	SCREW	XX	P	STEEL	Zn Plated
4	BLOCK	XX	P	BRASS	Ni Plated
3	CLAMP	XX	P	BRONZE	Ni Plated
2	COVER	XX	1	PA66 UL94V-0	SEE NOTE
1	HOUSING	XX	1	PA66 UL94V-0	SEE NOTE
ITEM	NAME OF PART	NO. OF PART	Q"TY	MATERIAL	NOTE
DWG.	CXL	DATE	20.07.15	SIZE	A4 UNITS mm SHEET/OF 1 / 1
CHK.		DATE		SCALE	1:1
APP.		DATE		NAME	2EGTKA-5.08-XXP-XX-100
				DWGNO.	XXXX

Total Pitch Tolerances in mm										Nominal dimension range in mm										⊥	=	—	//		
over 0	over 30	over 53	over 70	over 90	over 115	over 150	over 250	over 350	over 500	over 0	over 30	over 53	over 70	over 90	over 115	over 150	over 200	over 250	over 320	0	over 10	all	over 0	over 100	over 150
±0.18	±0.20	±0.25	±0.3	±0.35	±0.44	±0.60	±0.70	±0.85	±0.20	±0.25	±0.30	±0.35	±0.44	±0.55	±0.70	±0.80	±0.90	0.2	0.3	0.3	0.2	0.3	0.5		