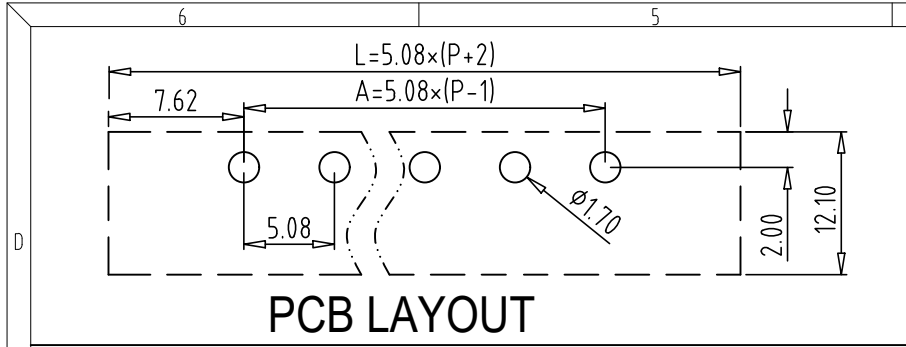
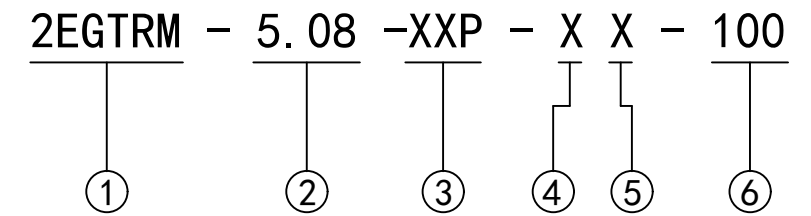


REV	CONTENT	CHK	DATE
V0.0	CONTENT	MYZ	21.07.06

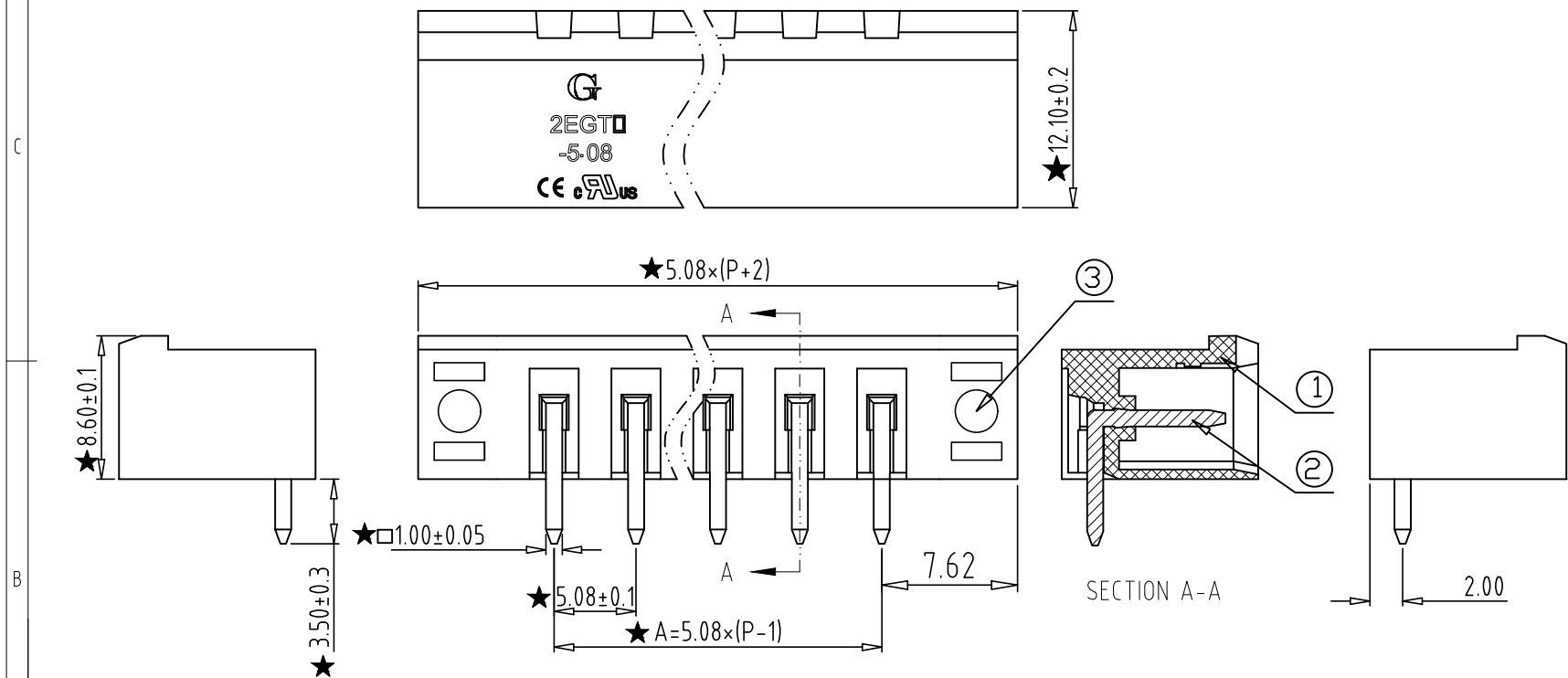


**Electrical :**

- |  |               |      |
|--|---------------|------|
|  | UL            | IEC  |
| 1. Rated Voltage :                       | 300V          | 320V |
| 2. Rated Current :                       | 15A           | 20A  |
| 3. Withstanding Voltage :                | AC1600V/1Min; |      |
| 4. Operating Temperature :               | -40°C~+105°C; |      |
| 5. RoHS Compliance;                      |               |      |
| 6. Safty Approval :                      | cULus CE      |      |
| 7. "★" is the key quality control point. |               |      |



- ① Series No.
- ② Pitch
- ③ Poles  
02 02Contacts  
03 03Contacts  
...  
24 24Contacts
- ④ 1 Single Pitch  
2 Double Pitch
- ⑤ Color: 1 Grey  
2 Blue  
3 Black  
4 Green  
5 Orange  
6 Red  
7 Transparent  
8 Yellow  
9 White
- ⑥ Customer Request: 100--Standard



Total Pitch Tolerances in mm										Nominal dimension range in mm										⊥	=	-	//				
over	over	over	over	over	over	over	over	over	over	over	over	over	over	over	over	over	over	over	over	over	over	over	over	over	over	over	over
0	30	53	70	90	115	150	250	350	500	0	30	53	70	90	115	150	200	250	320	0	10	all	0	100	150	200	
±0.18	±0.20	±0.25	±0.3	±0.35	±0.44	±0.60	±0.70	±0.85	±0.20	±0.25	±0.30	±0.35	±0.44	±0.55	±0.70	±0.80	±0.90	0.2	0.3	0.3	0.2	0.3	0.5				

3	NUT	XX	2	BRASS	--
2	PIN	XX	P	BRASS	Tin Plated
1	HOUSING	XX	1	PA66 UL94V-0	GREEN
ITEM	NAME OF PART	NO. OF PART	Q'TY	MATERIAL	NOTE
DWG.	MYZ	DATE	21.07.06	SIZE	A4 UNITS mm SHEET/OF 1/1
CHK.	DATE		SCALE	1:1	
APP.	DATE				
NAME			2EGTRM-5.08-XXP-XX-100		
DWGNO.			XXXXX		