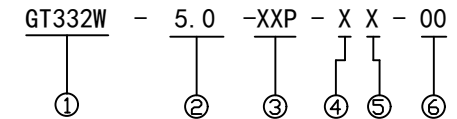


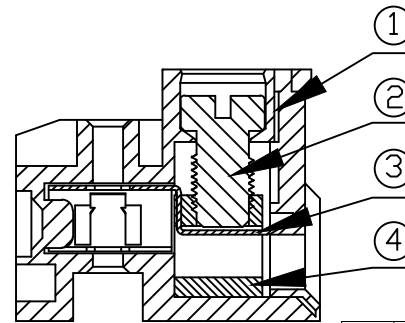
REV	CONTENT	CHK	DATE
VO.0	CONTENT	MYZ	21.06.29

Electrical :

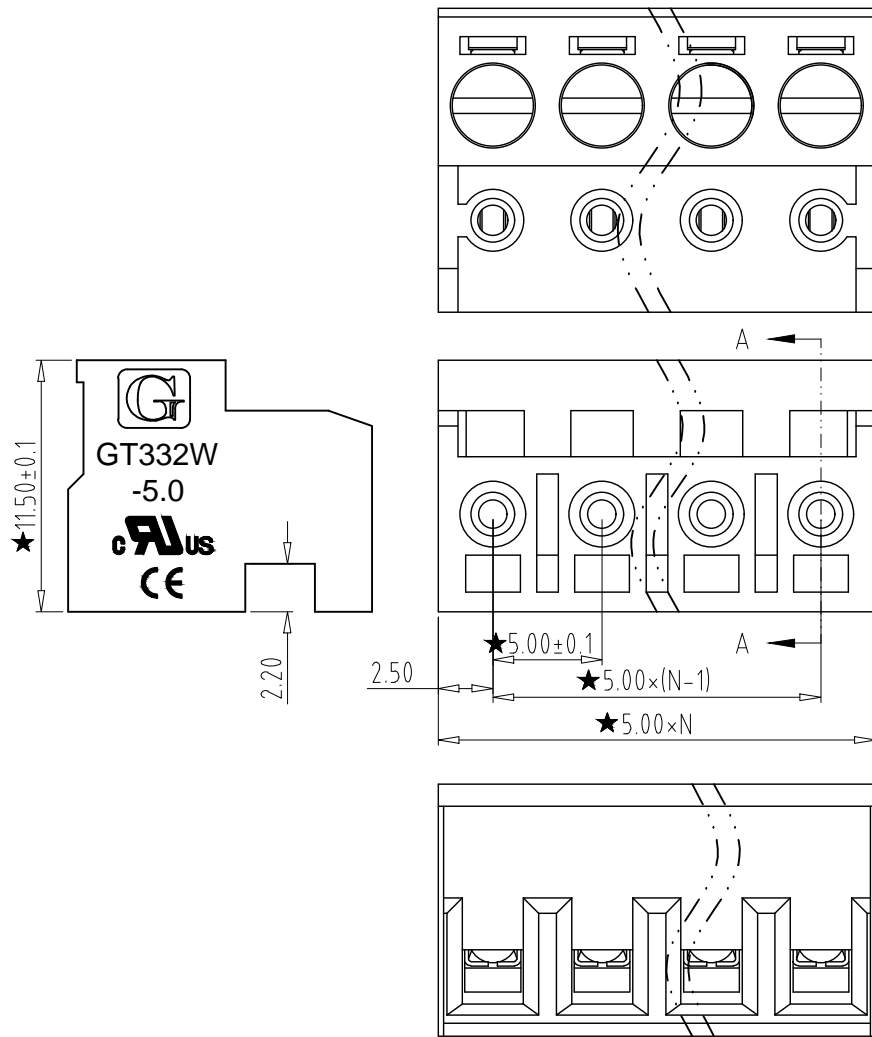
- |   |                 |                        |
|---|-----------------|------------------------|
|   | UL              | IEC                    |
| 1. Rated Voltage :                        | 300V            | 250V                   |
| 2. Rated Current :                        | 10A             | 12A                    |
| 3. Torque Value :                         | M2.5, 3.54Lb.in | M2.5, 0.4N.m           |
| 4. Wire Range:                            | 30-16AWG        | 0.2-1.5mm <sup>2</sup> |
| 5. Stripping Length :                     | 5-6mm           |                        |
| 6. Withstanding Voltage :                 | AC2000V/1Min.   |                        |
| 7. Operating Temperature :                | -30°C~+120°C    |                        |
| 8. RoHS Compliance                        |                 |                        |
| 9. Safety Approval :                      | UL CE           |                        |
| 10. "★" is the key quality control point. |                 |                        |



- ① Series NO.    ④ 1 Single Pitch  
                             2 Double Pitch
- ② Pitch            ⑤ Color: 1 Grey  
                             2 Blue  
                             3 Black  
                             4 Green  
                             5 Orange  
                             6 Red  
                             7 Transparent  
                             8 Yellow  
                             9 White
- ⑥ Customer Request: 00--Standard



SECTION A-A



Total Pitch Tolerances in mm										Nominal dimension range in mm										⊥		≡		—		//	
over	over	over	over	over	over	over	over	over	over	over	over	over	over	over	over	over	over	over	over	over	over	over	over	over	over	over	over
0	30	53	70	90	115	150	250	350	500	0	30	53	70	90	115	150	200	250	320	0	10	0	100	0	100	0	150
to	to	to	to	to	to	to	to	to	to	to	to	to	to	to	to	to	to	to	to	to	to	to	to	to	to	to	to
30	53	70	90	115	150	250	350	500	500	30	53	70	90	115	150	200	250	320	10	10	100	100	150	150	150	0.2	0.3
±0.18	±0.20	±0.25	±0.3	±0.35	±0.44	±0.60	±0.70	±0.85	±0.20	±0.25	±0.30	±0.35	±0.44	±0.55	±0.70	±0.80	±0.90	0.2	0.3	0.3	0.3	0.2	0.3	0.2	0.3	0.2	0.3

4	CAGE	XX	P	Brass	Ni Plated
3	CLAMP	XX	P	Phosphor Bronze	Ni Plated
2	SCREW	XX	P	steel	Zn Plated
1	HOUSING	XX	1	PA66 UL94V-0	SEE NOTE
ITEM	NAME OF PART	NO. OF PART	Q'TY	MATERIAL	NOTE
DWG.	MYZ	DATE	21.06.29	SIZE	A4 UNITS mm SHEET/OF 1 / 1
CHK.	DATE			SCALE	1:1
APP.	DATE			NAME	GT332W-5.0-XXP-XX-00

**Grolten** 宁波冠泰电子有限公司  
NINGBO GOLTEN ELECTRONICS CO., LTD.